



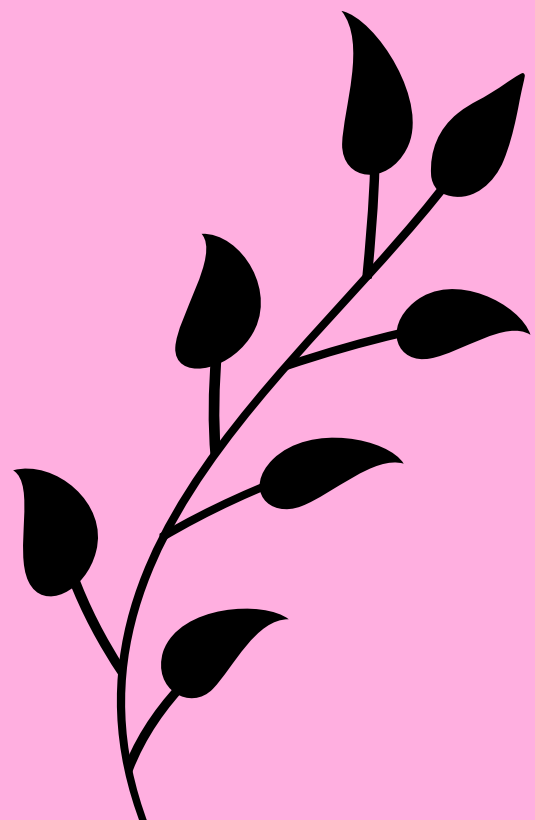
# **SOGI MYTH BUSTERS**

Shannon Greig, Krysta Hamm, Sharon Widdows  
November 28, 2023

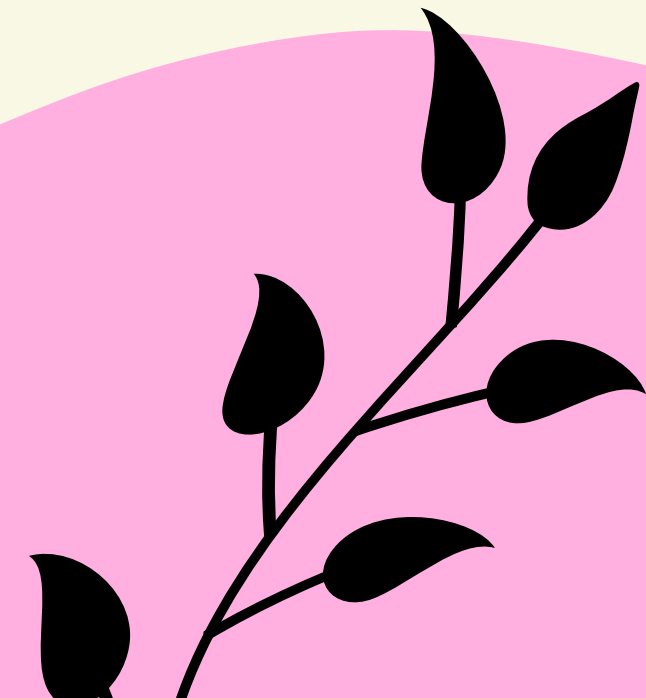


We are here tonight to provide information and clarification to community and family members on what SOGI-inclusive education looks like in the Mission Public School District.

We thank you for your attendance.



SOGI-centered education is **NOT**  
centered in sexuality.



# MPSD

The MPSD is committed to ensuring every classroom is welcoming and that all students and staff feel safe and supported.



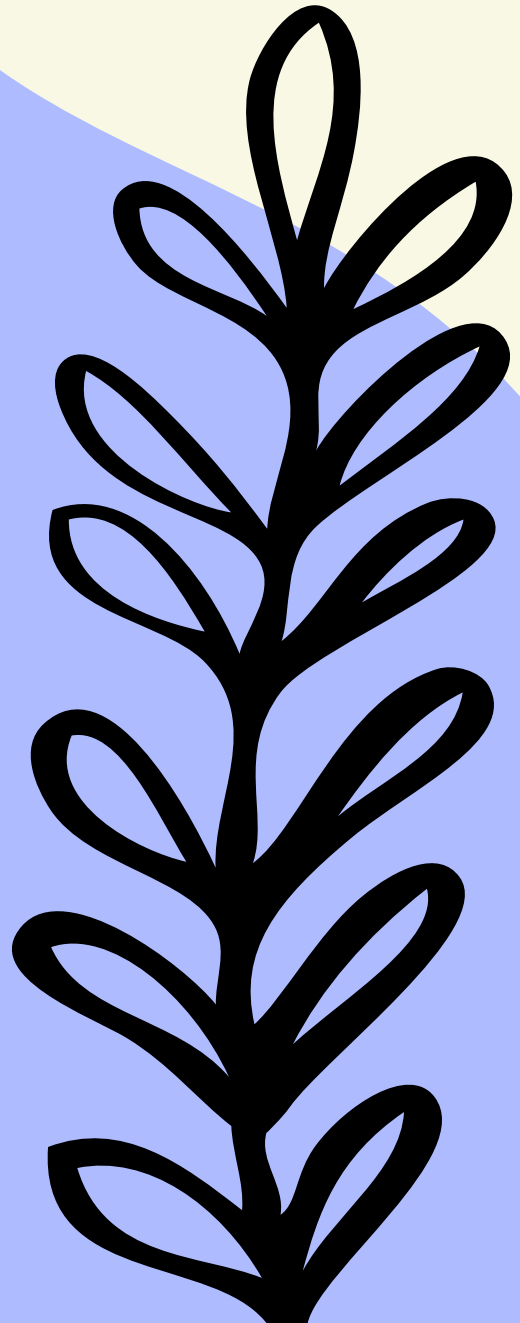
# MPSD

Employees of the MPSD are committed to acceptance, inclusion, and working in a welcoming community. They are bound by the **BC Human Rights Code**, as employees, which protects sexual orientation, gender identity, AND gender expression.



# PROTECTIONS

Sexual orientation and gender identity/expression are also protected under **the Canadian Charter of Rights and Freedoms**, and provincial legislation, including **the Safe and Caring School Communities policy**.



# OUR COMMITMENT

We fully support educators and schools as they integrate **age-appropriate** references to diversity in sexual orientation and gender identity.

This fosters dignity and respect while reducing incidents of violence and discrimination against 2SLGBTQ+ peoples.



**MYTH:** SOGI-inclusive education promotes a specific sexual orientation or gender identity

**FACT:** SOGI-inclusive education does **NOT** promote any specific identity and is designed to create a safe and inclusive environment for all. It combats discrimination by **providing representation** of all types of people in classroom resources and enhancing awareness of experiences and challenges faced by 2SLGBTQ+ peoples.

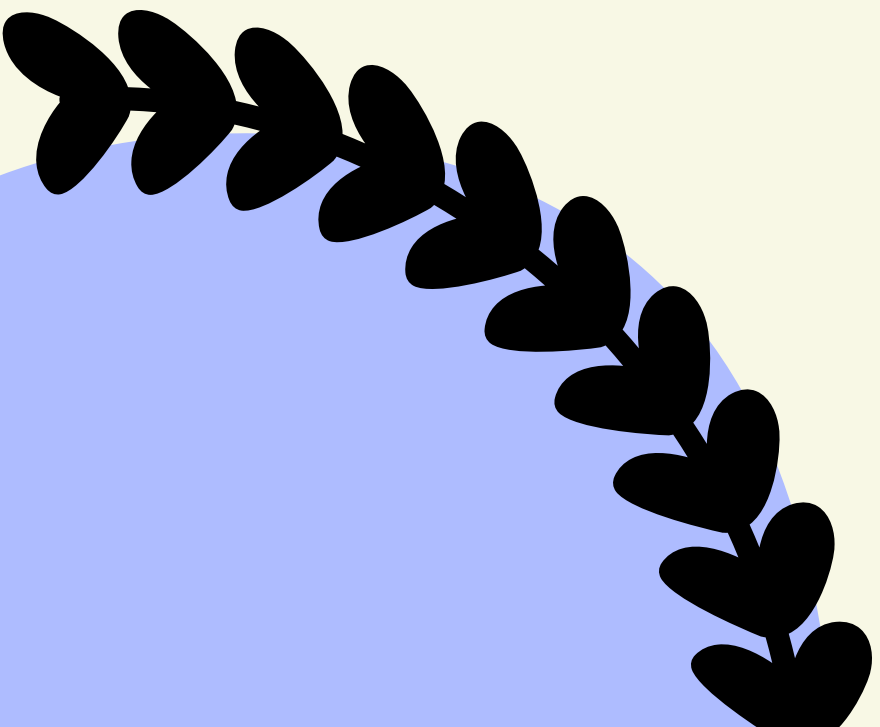


**MYTH:**

SOGI-inclusive resources are inappropriate and have explicit content.

**FACT:**

There is **NO** pornographic or explicit content in any SOGI-inclusive resources. SOGI-inclusive education addresses topics like **identity, family diversity, stereotypes, bullying, and name calling.**





## **MYTH:**

SOGI-inclusive education violates parents' rights.

## **FACT:**

SOGI-inclusive education is meant to complement parents' efforts in teaching **essential values of tolerance, respect, and acceptance** of all people. It contributes to a greater understanding of diversity and inclusion.

## **MYTH:**

SOGI-inclusive education is about "recruiting" students to be 2SLGBTQ+

## **FACT:**

This is a baseless myth.

SOGI-inclusive education aims to **create acceptance and inclusion**; it does not seek to influence students' identities.

Teachers greatly value the unique individual identities of students.

**MYTH:** SOGI-inclusive education is the same thing as sexual health education.

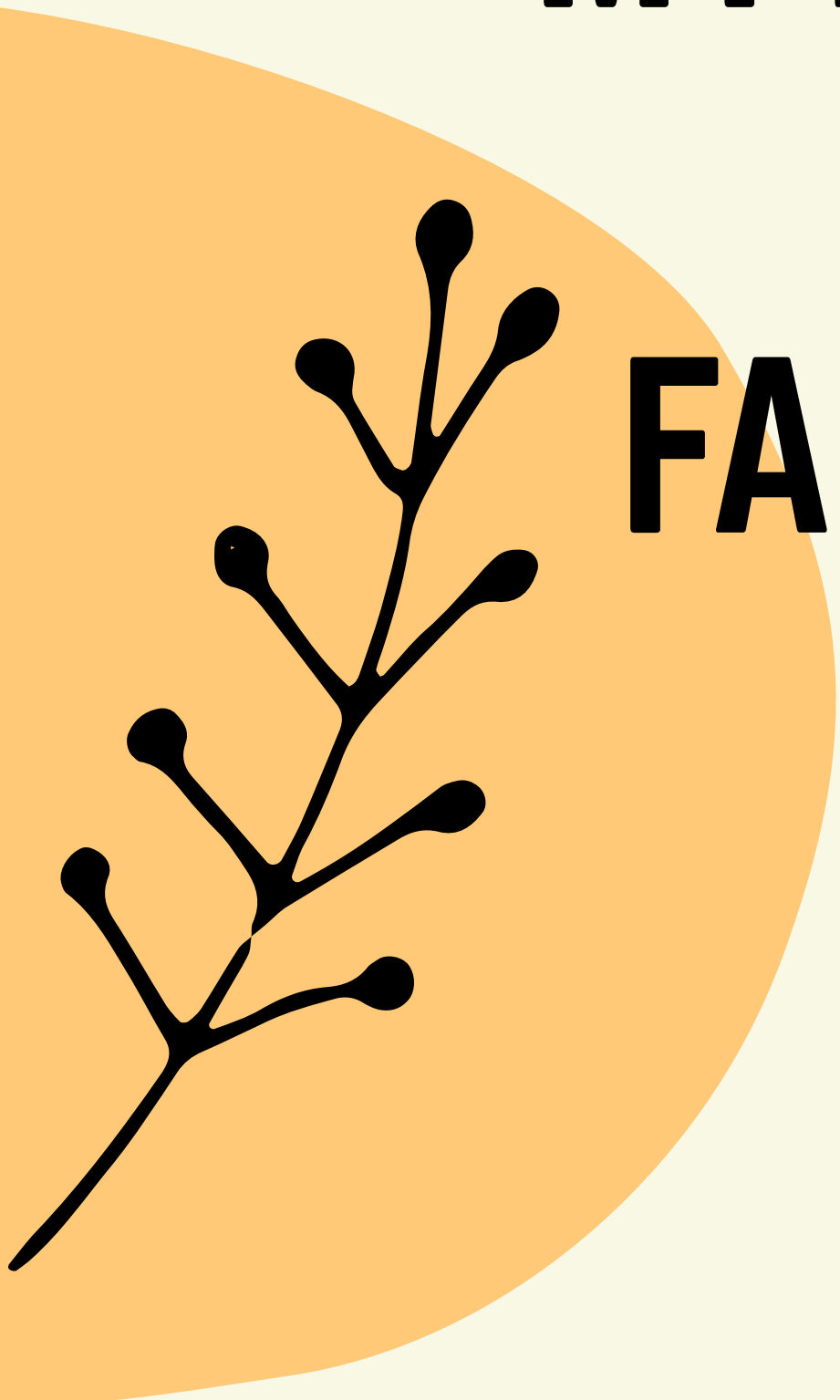
**FACT:** SOGI is a distinct topic from sexual health education. SOGI-inclusive education aims to **promote understanding, inclusivity,** and support for all students.



# FACT:

Sexual health education is a part of BC's Physical and Health Education curriculum and focuses on the **biological, physiological, and reproductive** aspects of human sexuality. It is taught separately. Parents and guardians may consult with their school and arrange for alternative delivery for certain topics.





**MYTH:**

SOGI-inclusive education is inappropriate for students.

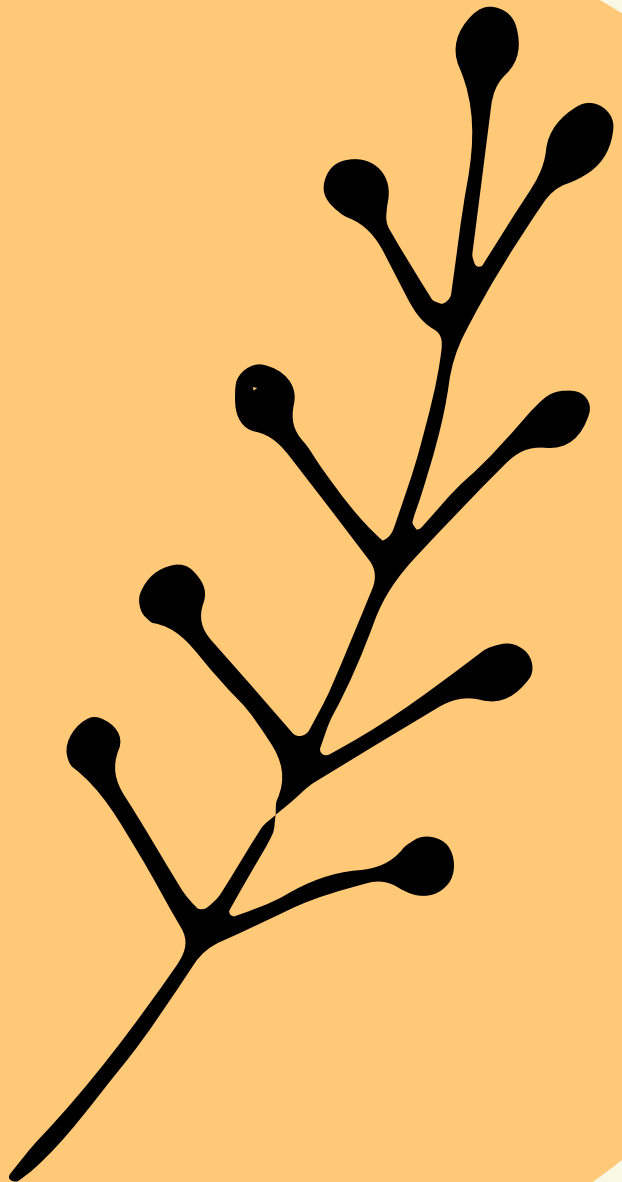
**FACT:**

**ALL** students learn about respect, compassion, and diversity, while more complex topics like discrimination and injustice may be explored later in a developmentally and age-appropriate manner.

# FACT:

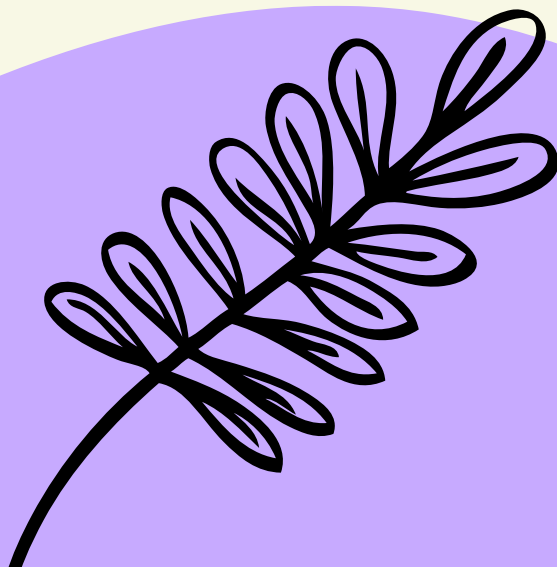
SOGI-inclusive resources play a pivotal role in addressing fundamental human ideals like diversity, acceptance, and a sense of belonging.

SOGI-inclusive education is essential for **every child**.



**MYTH:** SOG-inclusive education is a recent and controversial addition to education.

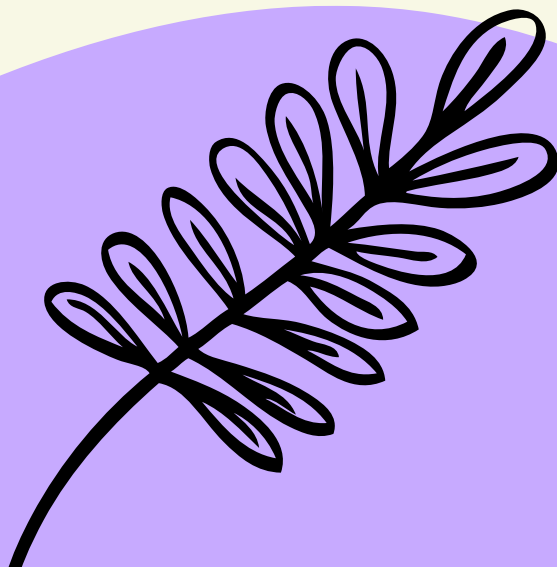
**FACT:** SOG-inclusive education, like the inclusion of diverse cultures and races, has been a part of the broader goal for diversity and inclusion in our schools for **decades**.





# FACT:

Although SOGI has gained increased attention recently, it is **not a new concept** and is supported by educational organizations, school districts, and child development and health experts. SOGI is also protected legally.



**MYTH:** SOGI-inclusive education is not needed because these issues are not relevant to all students.

**FACT:** These issues are relevant to **every single student**. SOGI-inclusive education is intended to foster inclusivity and respect, address issues of discrimination and bullying, and build understanding and empathy.



# FACT:

Furthermore, 2SLGBTQ+ students and staff are **members of our school communities** and often face unique challenges related to identity.



# FACT:

Studies show that having inclusive classrooms and SOGI-specific anti-bullying policies improves school climate, and reduces discrimination, depression, anxiety, substance use, suicide ideation, and suicide attempts for **ALL** students.



## **MYTH:**

School libraries have books that are not safe for children.

## **FACT:**

Our school district has **comprehensive policies** that guide teacher librarians when selecting books for school libraries.

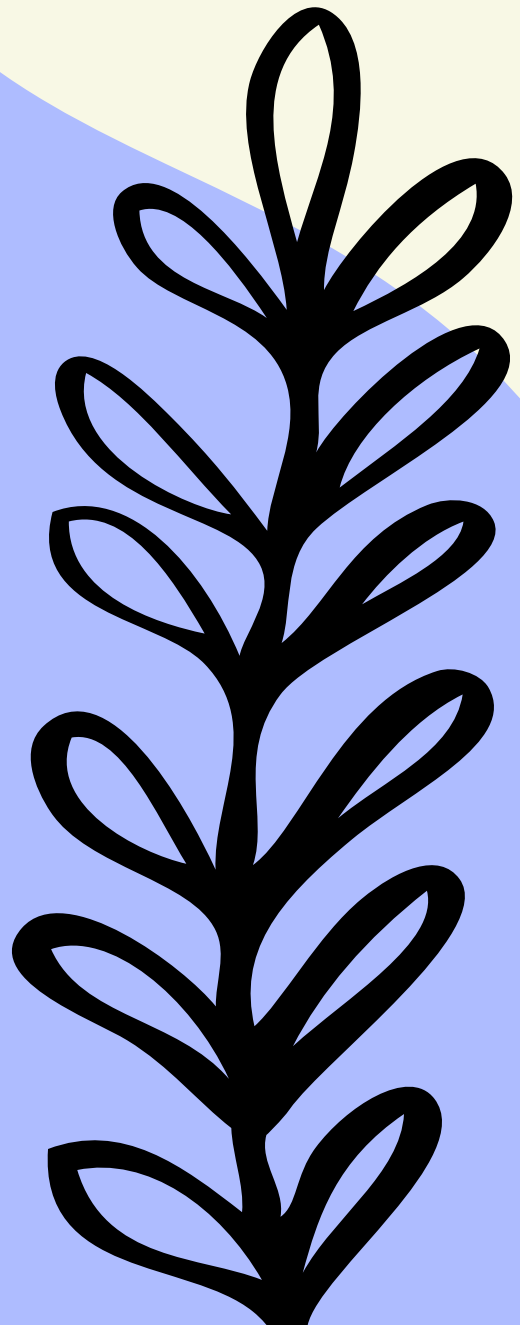


## **MYTH:**

SOGI-inclusive education encourages students to transition to a different gender.

## **FACT:**


The role of districts does **not** include decision-making about students' gender exploration or transition.



**MYTH:** Gender affirming care can be done in secret.

**FACT:** Gender-affirming care **requires parental consent** for those under age. It often involves specialist assessments and lengthy wait times of multiple years, and **does not happen in schools.**





## MYTH:

Letting transgender people use the correct bathroom is a safety risk to cisgender people.

## FACT:

In studies, there has been **no evidence that transgender people pose any danger** to cisgender people in bathrooms. In fact, studies show transgender people are far more likely to be sexually assaulted in a bathroom.

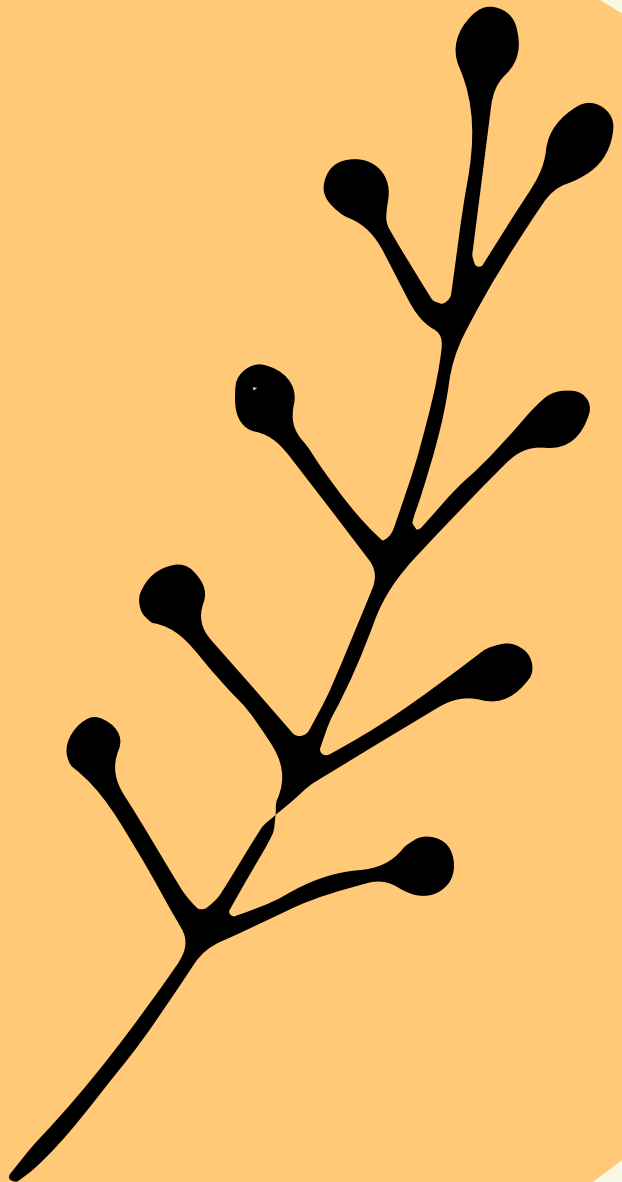


**MYTH:**

SOGI-inclusive education is "grooming" students.

**FACT:**

This is conflating the act of teaching self-acceptance with brainwashing. It ignores the need for diversity and inclusive education that 2SLGBTQ+ adults say would have helped them when they were younger.



**MYTH:** Schools are keeping SOGI-inclusive education a secret from families.

**FACT:**

Our schools encourage students to share their learning with families. We want all families to support their children and schools in teaching respect and inclusion.



# THANK YOU!

A big thank you to Surrey School District for the resources that supported this presentation, and to the SOGI supporters in MPSD that always put our students first.

